

PHILLIPS ACADEMY
180 Main Street
Andover, Massachusetts 01810-4161

School Code Number: 220030

John G. Palfrey, *Head of School*



Phillips Academy ANDOVER

2014–2015 PROFILE

FOR COLLEGE ADMISSION OFFICES

Prepared July 2014

COLLEGE COUNSELING OFFICE
Sean M. Logan, *Director*
Anne Ferguson, *Senior Associate Director*

Associate Directors:
Marvin A. Coote, Magdalena L. Farnsworth,
Karina E. Hernandez-Guarniz,*
Aya S. Murata, M. Kenneth Shows,
Stephen A. Silversides, LaShawn N. Springer

Consultants:
Carl W. Bewig, Anya P. Brunnick
978-749-4150; fax 978-749-4160
college-counseling@andover.edu
www.andover.edu/cco

** Leave of Absence until December 2014*

THE SCHOOL

Phillips Academy, founded in 1778, is a coeducational boarding school, grades 9–12 and postgraduate. In 1973 the school merged with Abbot Academy, the oldest chartered girls' school in New England. Andover is committed to enrolling able students from all economic levels, from every racial, religious, and ethnic entity, from every quarter of American life, and from foreign lands.

STUDENT DIVERSITY

The Academy is committed to establishing a community that encourages people of diverse backgrounds and beliefs to understand and respect one another and to be sensitive to differences of gender, ethnicity, class, and sexual orientation. Andover's 1778 Constitution charges the Academy to prepare "youth from every quarter" to understand that "goodness without knowledge is weak . . . yet knowledge without goodness is dangerous." Students of color constitute more than one-third of the student body. A typical entering class contains students from 40 or more states and 25 or more countries.

NEED-BLIND ADMISSION

In 2007, the Academy adopted a need-blind admission policy. The Academy meets 100 percent of demonstrated need.

THE CLUSTER SYSTEM

In order to bring the advantages of a small school to an institution that already has the advantage of size, Andover has adopted the cluster system. A cluster can be defined as a group of contiguous residence halls. Comments by applicants and counselors regarding cluster activities refer to five groups of about 220 students each. A cluster functions independently, managing its own social activities, academic advising, disciplinary counseling, and athletic affairs under the leadership of a cluster dean.

OFF-CAMPUS PROGRAMS

Andover students can participate in several off-campus study programs both in the United States and in other countries. Some, such as School Year Abroad, encompass the entire academic year, while others are for one trimester or occur during the summer.

ACTIVITIES

Each student spends approximately two hours every weekday afternoon in a required supervised activity. For most students, this is an athletic commitment at the varsity, junior varsity, or intramural level. For others, afternoons focus on volunteer work through the Community Service Program, independent musical pursuits, or physical fitness/endurance activities (e.g., Outdoor Pursuits, martial arts, dance).

POLICY ON DISCIPLINE

Students and college counselors will work together to address questions about serious disciplinary infractions (suspension and probation) when asked on college applications.

THE ACADEMIC PROGRAM

Andover's *Course of Study* is available online at www.andover.edu/Academics/Documents/CourseofStudy2014_2015WEB.pdf.

Average class size—13 students Available courses—300+

Under the Trimester Program, the school year is divided into three terms, each consisting of approximately 10 weeks of classes plus an assessment period. Many courses are yearlong, some are term-contained, and others are organized as two-term sequences. Students are normally expected to carry five courses each trimester. Most courses meet four or five periods per week. Some courses, as noted in the *Course of Study*, meet six or more hours per week. Eleventh-graders or seniors who face an unusually demanding term occasionally are advised to enroll in four courses, provided at least three of these are advanced courses. Postgraduates usually take four courses per term (see list of Advanced Courses). Over the span of their last two years, students are required to complete at least 27 trimester units.

Andover's academic program is based upon the premise that students are capable of studying independently, responsibly, and with self-direction. As a result, students spend a significant number of hours on homework, research, and other out-of-class study and projects.

In most courses, especially those taken to meet diploma requirements, class time and homework together can be expected to require a total of about nine hours per week per course. Thus, a typical student enrolled in five courses can expect to spend at least 45 hours each week on academic pursuits—and more than that when significant papers are due or to prepare for exams.

GRADING SYSTEM

The grading scale is from 0 to 6. A few courses are graded as Pass/Fail. Assessment periods conclude November 21, March 5, and June 4. Beginning with the 2014–2015 academic year there will be no honor roll designation.

- 6 – Outstanding (High Honor)
- 5 – Superior (Honor)
- 4 – Good
- 3 – Satisfactory
- 2 – Low Pass, but certifying
- 1 – Failure
- 0 – Low Failure

Please note that students receive Pass/Fail grades for English and history courses in the fall of 9th grade. For this reason, we do not compute a grade point average for this term.

STATEMENT ON CLASS RANK

The faculty has chosen not to rank students. Because of the highly competitive nature of admission to Andover, the variety of academic backgrounds of our students, and the various points at which students may enter the school, attempting to calculate a numeric rank that reflects the strengths and differences within and among students would not yield a fair or useful picture of a graduating class. All enrolled students, regardless of grade level, must be candidates for the diploma.

DIPLOMA REQUIREMENTS

Diploma requirements vary according to the grade-year in which students enter. These requirements also vary depending upon the student's initial level of placement. Although most entering students receive an assortment of such credits toward the diploma, a four-year student entering Phillips Academy placed at the beginning level across the curriculum must complete the following diploma requirements:

- 9 trimester credits of English
- 9 trimester credits of foreign language
- 8 trimester credits of mathematics (through precalculus)
- 7 trimester credits of history and social science
- 6 trimester credits of laboratory science
- 4 trimesters of art, music, theatre, and dance (with at least 1 trimester each in art and music)
- 1 trimester of philosophy and religious studies
- 1 trimester of physical education

The diploma requirements are designed to maximize academic breadth while preserving depth via electives. Please note that it is typical for students to go beyond Andover diploma requirements in many areas. Diploma requirements are discussed in greater detail in the *Course of Study* at www.andover.edu/Academics/Documents/CourseofStudy2014_2015WEB.pdf.

Within the framework of these diploma requirements, students follow an individualized program of study. The common pedagogical threads include (1) matching students with appropriately demanding academic challenges, (2) daily accountability in class meetings, and (3) an insistence on rigor in all courses.

INDEPENDENT RESEARCH PROGRAMS

Students who have exhausted the curriculum in one or more disciplines may pursue an independent research program. Working closely with one or more faculty members, students delve deep into a topic of their choice. IPs may be graded 0–6 or Pass/Fail.

COURSE NUMBERS

The first digit corresponds to the “level” of the course:

- Level 1 = 100; for courses that introduce a subject (*SPAN-100*) or that are typically taken by 9th-graders (*BIOL-100*, *ENGL-100*).
- Level 2 = 200; for courses that are the second level in a sequence (*SPAN-200*) or that are typically taken by 10th-graders or 9th-graders (*ART-225*, *HIST-200*).
- Level 3 = 300; for courses that are the third level in a sequence (*SPAN-300*), or for courses that are appropriate for 11th-graders (*ENGL-300*) or for 9th-, 10th-, and 11th-graders (*PHRE-300*, *CHEM-300*).

- Level 4 = 400; for courses that are the fourth level in a sequence, or for courses that are appropriate for seniors (but do not qualify for the 500 or 600 designations).
- Level 5 = 500; for courses that are equivalent to college freshman classes, sometimes, but not always, indicated by explicit preparation for an AP exam.
- Level 6 = 600; for courses that would typically be taken by majors in the subject in college, or for courses typically taken after the first year of college.
- Performance-based credit = 900; for course credit associated with performance, such as music lessons or participation in music ensembles for credit. Numbers followed by “H” indicate higher-level performance requirements, such as ensembles with competitive auditions.

The second and third digits (as in *ART-225*) reflect organizational schemes at the departmental level, and therefore will be used differently by different departments. Letters also are used for these purposes.

ADVANCED COURSES

Listed here are all advanced, honors, and accelerated and/or Advanced Placement courses. These rigorous and demanding courses require extra preparation and study time. Most use college texts and are paced to match undergraduate offerings. A few 300-level, some 400-level, and all 500-level courses are at or beyond typical AP level, and the 600-level courses are typically the equivalent of sophomore-level college courses. For course titles and descriptions, refer to Andover's *Course of Study*, available at www.andover.edu/Academics/Documents/CourseofStudy2014_2015WEB.pdf.

Art

All 300–600-level studio courses are at a level appropriate for students interested in assembling an AP portfolio
Art 400 History of Art is at AP level

English

All 500-level courses are at or beyond AP level

History and Social Science

History 300–310 are at AP level
History 520 and 521 together prepare for Macro and Micro Economics AP
All 500-level and above are at or beyond AP level

Mathematics

Math 280 Accelerated Geometry and Precalculus
Math 380 Accelerated Precalculus
Math 530 AP Statistics
Math 560, 570 AP Calculus AB
Math 575 Accelerated AP Calculus AB
Math 578 AP AB Calculus AB
Math 580, 590 AP Calculus BC
Math 595 Accelerated AP Calculus BC
Math 630 Honors Seminar is beyond AP level
Math 650 Multivariable Calculus and Linear Algebra
Math 651, 661 are beyond AP level (*discontinued as of fall 2014*)
Computer 500 AP Computer Science AB
Computer 630 Honors Seminar is beyond AP level

World Languages

Arabic 120, 220 (*discontinued as of fall 2012*)
Chinese 120, 220, 320 are accelerated
Chinese 400, 500 are advanced
Chinese 520 (AP Chinese)
Chinese 600 (*discontinued as of fall 2014*)
Chinese 620, 640 are beyond AP level
French 120, 220, 320 are accelerated
French 400, 420, 520 are advanced
French 620 is beyond AP level
German 150, 250 are accelerated
German 400 is advanced
German 520 is at AP level
German 600 is beyond AP level
Greek 150
Japanese 400, 420, 500, 520, 600
Latin 150; 520 Lyric, Horace, and Catullus; 520 Vergil
Russian 150, 250 are accelerated
Russian 400, 520, 600 are advanced
Spanish 120, 220, 320 are accelerated
Spanish 400, 401 are at AP level
Spanish 500, 510, 511 are at AP level
Spanish 520, 521, 620 are beyond AP level
Spanish 550 (*discontinued as of fall 2014*)

Music and the Performing Arts

Music 400, 410, 460, 485, 500, 530, 540, 550

Philosophy and Religious Studies

All 400- and 500-level courses

Science

Biology 500 is at AP level
Biology 540, 560, 570 (*discontinued as of fall 2014*)
Biology 580 is beyond AP level
Biology 600, 610, 620 (Molecular and Cellular Biology: Laboratory Research)
Chemistry 300 (*discontinued as of fall 2014*)
Chemistry 500 (AP 2013–2014 and beyond)
Chemistry AP 550
Chemistry 580 is beyond AP level
Chemistry 610 Organic Chemistry is beyond AP level
Physics 395 (*discontinued as of fall 2014*)
Physics 400
Physics 520
Physics 530 Astronomy Research
Physics 550, 580 are at AP level
Physics 600, 630, 650 are beyond AP level

Theatre and Dance

Theatre Theory and History 330
Creative Self 370
Acting and Directing Workshop 510
Play Production Intensive 920
Andover Dance Group Seminar 900
THDA 565
THDA 901, 902, 903

THE 2014–2015 STUDENT BODY

	BOYS	GIRLS	TOTAL
Boarding	428	425	853
Day	147	140	287
Total	575	565	1,140

Students of Color—42%

Class Distribution

Grade 12—337 (includes 28 postgraduates)
Grade 11—290
Grade 10—280
Grade 9—233
Total enrollment—1,140

Geographic Distribution of Students

49 states, 38 countries, and 169 international students

Financial Aid

Percent of student body—47%
Total financial assistance—\$18,875,000

Fall 2014 Admission Statistics

Completed applications 3,055
Admitted 400 (*Admit Rate—14%*)
Matriculated 317 (*Yield—84%*)
Class rank median 99th percentile for new students

THE 2014–2015 FACULTY

Most Andover instructors live on campus and also serve as dormitory counselors, academic advisors, and/or coaches.

	MEN	WOMEN	TOTAL
Full-time	93	86	179
Part-time	13	20	33
TOTAL	106	106	212

Highest Degrees

PhD 41
JD 1
Master's 126
Bachelor's 43 (includes Teaching Fellows)
No degree 1

Academic Standing

Students are not ranked, and we do not calculate a cumulative grade average.

SAT Reasoning

Class of 2013 through June 2013 (304 students)

	Critical Reading	Math	Writing
700–800	50%	56%	51%
600–690	38%	38%	38%
500–590	12%	6%	10%
400–490	0%	0%	1%
Mean (National Mean)	688 (496)	701 (514)	690 (488)

ACT

Averages of all PA students tested in 2012–2013

Total # Tested	English	Math	Reading	Science	Composite
152	31.1	30.3	30.3	28.6	30.2
(National Mean)	(20.2)	(20.9)	(21.1)	(20.7)	(20.9)

Advanced Placement Examination

In 2013, 455 candidates sat for 897 examinations. The overall distribution of scores is:

5—59% 4—27% 3—11% 2—3% 1—0%

Class of 2014—National Merit Scholarship Program

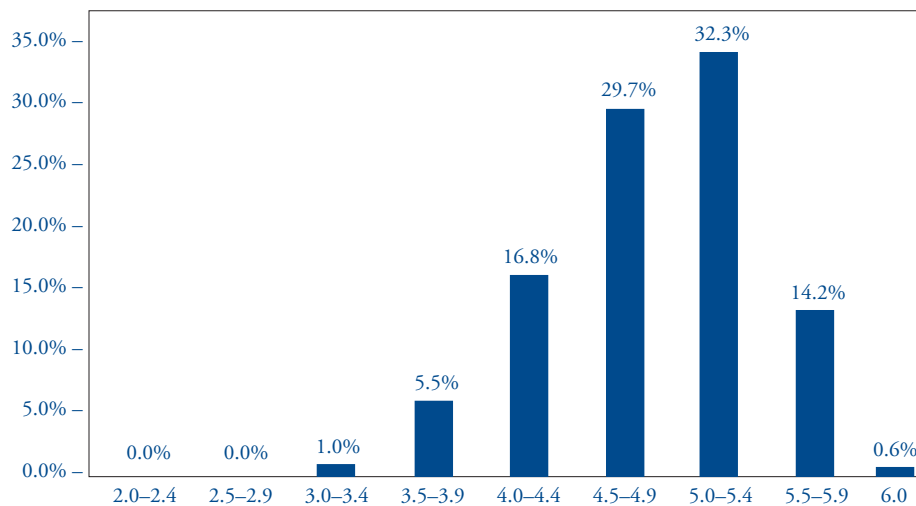
Merit Semifinalists—28; Achievement Semifinalists—2

SAT Subject Test

Class of 2013 through June 2013

Subject	Mean Score	(National Mean)	No. of Tests
LR	670	(604)	115
UH	696	(640)	81
WH	680	(619)	7
M1	681	(617)	37
M2	722	(677)	248
BY-E	708	(623)	25
BY-M	715	(654)	62
CH	704	(662)	109
PH	701	(662)	67
CL	729	(759)	16
FR	713	(631)	25
JL	756	(692)	5
LT	667	(616)	13
SP	694	(649)	30
SL	724	(670)	5

**CLASS OF 2015
GRADE RANGE DISTRIBUTIONS, JULY 2014**





Phillips Academy
ANDOVER

CLASS OF 2014 MATRICULATION STATISTICS *as of July 31, 2014*

COLLEGE/UNIVERSITY	MAT	COLLEGE/UNIVERSITY	MAT	COLLEGE/UNIVERSITY	MAT
American University	4	Emory University	2	Queen's University	1
Amherst College	3	Franklin & Marshall College	1	Reed College	1
Antioch College	1	George Washington University	2	Rensselaer Polytechnic Institute	1
Babson College	1	Georgetown University	12	Rice University	3
Barnard College	2	Georgia Institute of Technology	2	University of Richmond	1
Bates College	3	Gettysburg College	1	Sacred Heart University	1
Baylor University	1	Hamilton College	2	Saint Anselm College	1
Boston College	7	Harvard College	10	University of San Diego	1
Boston University	4	Harvey Mudd College	3	Sciences Po–Columbia University Dual BA Program	1
Bowdoin College	3	Haverford College	2	Scripps College	1
Brandeis University	1	College of the Holy Cross	1	Skidmore College	1
Brown University	8	University of Houston	1	Smith College	1
Bucknell University	1	Univ. of Illinois at Urbana-Champaign	1	Univ. of Southern California	3
Univ. of California, Berkeley	8	Johns Hopkins University	3	Southern Methodist University	1
Univ. of California, Los Angeles	5	King's College London	1	St. Lawrence University	1
Univ. of California, San Diego	2	Lake Forest College	1	Stanford University	5
Univ. of California, Santa Barbara	1	Loyola University New Orleans	1	Stevens Institute of Technology	1
California Institute of Technology	1	Univ. of Maryland, College Park	1	Stonehill College	1
California State Polytechnic University, Pomona	1	Massachusetts Institute of Technology	2	Swarthmore College	1
Cardiff University	1	Univ. of Massachusetts, Amherst	6	Syracuse University	1
Carnegie Mellon University	3	McGill University	4	Univ. of Toronto–St. George	1
University of Chicago	14	University of Miami	1	Trinity College	2
Claremont McKenna College	5	University of Michigan	6	Tufts University	7
Colby College	1	Middlebury College	1	Tulane University	4
Colgate University	6	Montana State University	1	Union College	1
Colorado College	2	Mount Holyoke College	1	Vassar College	1
Columbia University	10	University of New Hampshire	1	Villanova University	1
University of Connecticut	1	New York University	8	Virginia Polytechnic Institute and State University	2
Cornell University	2	Univ. of North Carolina at Chapel Hill	6	University of Virginia	4
Dartmouth College	4	Northeastern University	6	Wake Forest University	2
Davidson College	1	Northwestern University	5	Washington University in St. Louis	10
University of Delaware	1	University of Notre Dame	2	Wellesley College	1
Drexel University	1	Oberlin College	1	Wesleyan University	4
Duke University	2	Occidental College	2	College of William and Mary	1
Earlham College	1	Parsons The New School for Design	1	Williams College	3
Eastman School of Music, University of Rochester	1	Peking University	1	Univ. of Wisconsin–Madison	1
Elon University	2	University of Pennsylvania	12	Worcester Polytechnic Institute	1
Embry-Riddle Aeronautical University, Florida	1	Princeton University	5	Yale University	12
		Providence College	1	TOTAL	323
		Purdue University	1		

Included are the 115 colleges where our graduates will enroll. The Class of 2014 applied to 276 colleges.



Phillips Academy
ANDOVER

COLLEGE MATRICULATION

In the past three years, five or more Phillips Academy students have matriculated at each of the following institutions:

COLLEGE/UNIVERSITY	MAT
American University	8
Amherst College	6
Bates College	11
Boston College	16
Boston University	9
Bowdoin College	7
Brown University	22
Univ. of California, Berkeley	13
Univ. of California, Los Angeles	11
Carnegie Mellon University	12
University of Chicago	28
Claremont McKenna College	11
Colby College	7
Colgate University	12
Columbia University	36
Cornell University	22
Dartmouth College	15
Duke University	12
Emory University	8
George Washington University	10
Georgetown University	34
Georgia Institute of Technology	7
Hamilton College	5
Harvard College	37
College of the Holy Cross	5
Johns Hopkins University	8

COLLEGE/UNIVERSITY	MAT
Lafayette College	5
Univ. of Massachusetts, Amherst	18
McGill University	9
University of Michigan	12
Massachusetts Institute of Technology	11
New York University	24
Univ. of North Carolina at Chapel Hill	10
Northeastern University	11
Northwestern University	12
University of Pennsylvania	39
Princeton University	15
Rice University	6
Univ. of Southern California	8
Stanford University	22
Trinity College	7
Tufts University	21
Tulane University	9
Vassar College	5
University of Virginia	7
Washington University in St. Louis	21
Wellesley College	5
Wesleyan University	21
College of William and Mary	6
Williams College	13
Yale University	39