



CHRISTCHURCH SCHOOL

49 Seahorse Lane, Christchurch, Virginia 23031
 www.christchurchschool.org
 804.758.2306 | Fax 804.758.0721
 College Board | ACT Code 470-500

John E. Byers,
Headmaster

Neal K. Keesee, Ph.D.,
Associate Headmaster

Donny Pyles,
Dean of Instruction

Elana Roseberry,
Director of College Placement

Tedd Roseberry,
Assistant Director of College Placement

Founded in 1921, Christchurch School is one of six church schools owned by the Episcopal Diocese of Virginia. Christchurch is a college-preparatory school for boarding and day students in grades 9 - 12.

Christchurch School employs an integrated academic curriculum to assist our students to build crucial cross-curricular, real-world skills. All academic disciplines work to implement this core set of cross-curricular skills:

*Critical thinking, problem-solving,
 and collaboration*

Communication and information literacy

Initiative and self-direction

Spiritual exploration and character development

Leadership and civic responsibility

In addition, these specific programs build real world connections between disciplines as well as our exit skills:

Immersion Trips: Each year students participate in a multi-day class trip within the Chesapeake Bay watershed. On these trips students interact with individuals and groups in the region, wrestling with multifaceted issues that face communities.

Independent Research Projects: Each year students engage in research, writing, and presentation work on real world issues.

Academic Common Experiences: Each year students read texts and view films that span disciplines, helping them to deliberately see connections in the issues and problems raised.

STUDENTS AND FACULTY

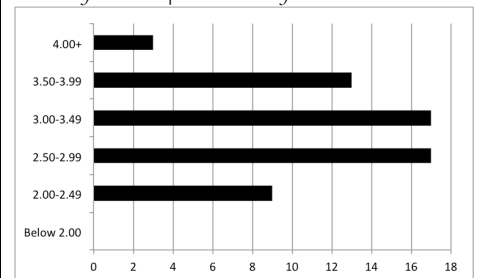
21 of the 33 teachers at the school hold advanced degrees in their fields. The school seeks teachers with diverse independent school and geographic backgrounds. Nearly all teachers are coaches and serve as faculty advisers for students. Boarding students represent thirteen states and ten countries, while day students represent six counties. There are 59 members of the class of 2014. The school admits academically qualified students without regard to race, creed, gender or ethnic origin.

Enrollment: 200
Teaching faculty: 33
Average class size: 12
Student/teacher ratio: 7:1
School gender distribution:
 70% male
 30% female

Class of 2014 | Middle 50% SAT
Critical reading 470-570
Math 500-600
Writing 450-570
Combined range 1430-1740

Class of 2014 | 98% admitted to four-year colleges
Class of 2014 | 93% attending four-year college

Class of 2014 | GPA Profile



GRADING

A+ 97-100	B+ 87-89	C+ 77-79	D+ 67-69	F below 60
A 93-96	B 83-86	C 73-76	D 63-66	
A- 90-92	B- 80-82	C- 70-72	D- 60-62	

Grade point averages are calculated on a traditional four point scale. They are computed at the end of each marking period for the purpose of determining Headmaster's List (3.5 or higher) and Dean's List (3.0- 3.49). Grades in all subjects are used for calculating honor rolls. Cumulative GPA is calculated from 1st semester of 9th grade to last semester 12th grade. GPA is calculated each semester and includes all subjects. All Honors courses are subjected to a weight of an additional 1.0 quality point. GPA is cumulative for grades 9 through 12; class rank is not reported.

CURRICULUM

<i>English</i>	English 9	English 10	English 11 / Honors English 11	English 12 / Honors English 12
<i>Language</i>	Spanish I & II Chinese I	Spanish I & II Advanced Spanish Electives Chinese II	Spanish II Adv / Honors Spanish Electives Honors Chinese III	Adv / Honors Spanish Electives Honors Chinese IV
<i>History</i>	Exploration, Colonization, and Conflict in the Early Americas	Modern World History Honors Modern World History	US History and Government Honors US History and Govt	The Contemporary World Senior Honors Seminar
<i>Math</i>	Integrated Algebra & Geometry I* Integrated Algebra & Geometry II*	Integrated Algebra & Geometry II* Integrated Algebra & Geometry III*	Integrated Algebra & Geometry III* Advanced Algebra & Trigonometry Pre-Calculus Finite Math/Probability & Statistics	Pre-Calculus Honors Calculus I Honors Calculus II Finite Math/Probability & Statistics
<i>Science</i>	Integrated Science I**	Integrated Science II**	Integrated Science III** Honors Integrated Science III**	Global Marine Ecology* Honors Environmental Science* Honors Biology* Honors Chemistry* Honors Physics* Honors Integrated Science III** Human Anatomy/Human Genetics
<i>Visual & Performing Arts</i>	Introduction to Art Theater Arts The Nature of Music The Art of Acting Special Topics in Music CCS Cantorion	Intermediate Art Theater Arts The Nature of Music The Art of Acting Special Topics in Music CCS Cantorion	Advanced Art Theater Arts The Nature of Music The Art of Acting Special Topics in Music CCS Cantorion	Advanced Art Theater Arts The Nature of Music The Art of Acting Special Topics in Music CCS Cantorion
<i>Other Courses</i>	LSP 9 Basic Athletic Training Introduction to Computer Science	LSP 10 Basic Athletic Training Local Environmental Issues Introduction to Computer Science	LSP 11 Basic Athletic Training Local Environmental Issues Introduction to Computer Science Honors Computer Science	LSP 12 Basic Athletic Training Local Environmental Issues Introduction to Computer Science Honors Computer Science Theology
<i>ESL</i>	Beginning ESL ESL History	Intermediate ESL	Advanced ESL	

* Completion of Integrated Algebra & Geometry I, II, and III earns the equivalent of one credit each for Algebra I, Algebra II, and Geometry

** Completion of Integrated Science I, II, and III earns the equivalent of one credit each for Conceptual Physics, Biology, and Chemistry. Completion of Integrated Science I, II, and Honors Integrated Science III earns the equivalent of one credit each for Physics, Chemistry, and Biology

* These science courses have a strong laboratory requirement

HONORS COURSE POLICY

Honors courses at Christchurch School are advanced, college-level courses that are designed to offer a stimulating, rigorous experience. Honors courses are equivalent in challenge to Advanced Placement courses, and provide advanced students with the opportunity to pursue studies in depth. In certain honors courses, students have the option to sit for the Advanced Placement exam, but doing so requires additional outside preparation, as these courses do not prepare students specifically for the Advanced Placement test. An additional GPA weight of 1.0 is added to the grade for honors courses.

COLLEGE ACCEPTANCES

Schools to which CCS students have been accepted since 2008 include:

The University of Alabama	Elon University	Marshall University	Roanoke College
American University	Emory University	Mary Baldwin College	Savannah College of Art and Design
Appalachian State University	Ferrum College	University of Mary Washington	Sewanee: The University of the South
Babson College	Furman University	Michigan State University	Shenandoah University
Boston College	George Mason University	University of Mississippi	Shepherd University
Boston University	The George Washington University	United States Naval Academy	University of South Carolina
Bridgewater College	Georgia Institute of Technology	New York University	Syracuse University
College of Charleston	University of Georgia	North Carolina State University	Virginia Commonwealth University
College of William and Mary	Gettysburg College	Northeastern University	Virginia Military Institute
Christopher Newport University	Hampden-Sydney College	Old Dominion University	Virginia Polytechnic Institute and State University
Coastal Carolina University	High Point University	Pennsylvania State University	Virginia Wesleyan College
Davidson College	James Madison University	Purdue University	University of Virginia
Denison University	Longwood University	Radford University	Wake Forest University
Drexel University	Loyola University New Orleans	Randolph-Macon College	Washington College
East Carolina University	Lynchburg College	University of Richmond	Wofford College

ACCREDITATION AND MEMBERSHIP

Christchurch School is accredited by the Virginia Association of Independent Schools. The Virginia Council for Private Education Commission on Accreditation and the Virginia State Department of Education recognize VAIS as a valid accrediting agency for private schools in the Commonwealth. Memberships include:

National Association of Independent Schools	Secondary Schools Admissions Test Board	Council for the Advancement and Support of Education
Virginia Association of Independent Schools	The College Board	National Association of College Admissions Counselors
Church Schools in the Diocese of Virginia	National Honor Society	Potomac and Chesapeake Association
National Association of Episcopal Schools	Council for Spiritual and Ethical Education	of College Admissions Counselors