



## GARRISON FOREST SCHOOL

300 Garrison Forest Road | Owings Mills, MD 21117 | p 410-559-3129 | f 410-559-3107  
CEEBS 210580 | [www.gfs.org](http://www.gfs.org)

Dr. Kimberley Roberts, Head of School  
Lorraine Polvinale, Assistant Head of School, Head of Upper School  
Ann Marie Strauss, Director of College Counseling, [annmariestrauss@gfs.org](mailto:annmariestrauss@gfs.org)  
Marty O'Connell, Senior College Counselor, [martyoconnell@gfs.org](mailto:martyoconnell@gfs.org)  
Lynn Lyon-Vaiden, College Counseling Assistant, [lynnlyonvaiden@gfs.org](mailto:lynnlyonvaiden@gfs.org)

### SCHOOL PROFILE 2014–2015

#### THE SCHOOL

Garrison Forest School, founded in 1910, is a PreK–12 girls' day and boarding school, located on 100 rural acres with easy access to the Baltimore and Washington areas. It is accredited by the Middle States Association of Colleges and Secondary Schools and the Association of Independent Maryland Schools.

#### ENROLLMENT

Total – 629. Upper School – 281. Senior Class – 68. Garrison Forest School is a diverse community. 32% of the Upper School population are students of color and 17% are foreign nationals.

#### GRADUATION REQUIREMENTS FOR THE CLASS OF 2014 (Beginning in the fall of 2013, GFS moved to a trimester system.)

English	4 credits	History	2 ⅔ credits	It is expected that a student will carry at least five academic credits per trimester and will graduate with a minimum of 21 credits.
Mathematics	3 credits	The Arts	2 credits	
Science	3 credits	Physical Education	2 credits	
Foreign/Classical Language	3 credits	Decision Making and Transitions	required, non-credit	

#### AP and HONORS CURRICULUM

Due to the demanding nature of our curriculum, students must be recommended for AP courses and are limited to two APs in the junior year and three in the senior year. Exceptions are made by formal request on an individual basis. Students enrolled in AP courses are required to sit for the AP exam.

Art History (AP)	Environmental Science (AP)	Latin II, III, and IV (Honors)
Biology (AP)	French Language and Culture (AP)	Physics (Honors: 2013-2014)
Calculus AB and BC (AP)	French II, III, and IV (Honors)	Spanish Language (AP)
Chemistry (AP) (Honors: 2013-2014)	Geometry/Trig, Algebra II/Trig, Precalculus (Honors)	Spanish II, III, and IV (Honors)
English Literature (AP)	Latin (AP)	US History (AP)
Psychology (AP)		

#### UPPER SCHOOL PROGRAM HIGHLIGHTS

**Women in Science and Engineering (WISE)** – an experiential immersion program for juniors and seniors in partnership with The Johns Hopkins University. WISE participants are paired with JHU faculty and work as a member of a research team. Placements are made in JHU's Whiting School of Engineering, Krieger School of Arts and Sciences, Bloomberg School of Public Health and the JHU Archeological Museum. The project culminates in a final oral and written presentation for JHU and GFS faculty. Students earn ⅔ credit.

**The Jenkins Fellows Program**—endowed in 2005, the program empowers GFS students to promote and commit to global community service. Sophomores and juniors, are invited to research international and national opportunities and limited numbers are selected through a competitive application process. Jenkins Fellows immerse themselves in summer service and return to campus to present reflections on their experiences to the GFS community. Jenkins Fellows serve as leaders of the student Service League Board for the remainder of their time at GFS. Recent projects include volunteering in an orphanage in Cambodia, working with Habitat for Humanity in Milwaukee, WI, volunteering in a hospital in the Czech Republic and mentoring the developmentally disabled at a therapeutic equestrian riding center in Ohio.

#### Independent Senior Project (ISP)

Students are required to complete a three-week unpaid internship in a professional environment at the end of their senior year. Recent ISP sites include Girls' Life Magazine, JHPIEGO, Roominate, Baltimore City Police Department, Special Olympics, Metropolitan Museum of Art, Baltimore Magazine, NASA's Goddard Space Center, Walt Disney Family Museum, Habitat for Humanity, T.Rowe Price, Johns Hopkins Hospital, as well as schools, hospitals and non-profit organizations.

## COURSES AVAILABLE TO STUDENTS IN THE CLASS OF 2015

(Beginning in the fall of 2013 GFS moved to a trimester system. Trimester credit values are reflected below.)

### ENGLISH

English IV AP  
English I, II, III, IV  
Lit Comp I, II

### MATHEMATICS

Algebra I  
Geometry  
Geometry/Trigonometry (H)  
Algebra II  
Algebra II /Trigonometry (H)  
Functions and Trigonometry  
Precalculus  
Precalculus (H)  
Statistics  
Calculus  
Calculus AB (AP)  
Calculus BC (AP)  
Adv. Calculus and Linear Algebra (Post AP)

### SCIENCES(all w/lab)

Biology (AP)  
Biology  
Physics (H)  
Physics  
Chemistry (AP)  
Chemistry (H)  
Chemistry  
Applied Chemistry  
Environmental Science(AP)  
Anatomy and Physiology  
Robotics and Engineering (2/3)  
Engineering Design  
Animal Behavior (2/3)  
Equine Science (1/3)  
Animal Science  
Intro to Computer Prog. (1/3)  
WISE (2/3)

### LANGUAGES

Chinese II, III, IV  
French V (AP)  
French II (H), III (H),  
IV (H)  
French I, II, III, IV, V  
Latin V (AP)  
Latin II (H), III (H),  
IV (H)  
Latin I, II, III, IV, V  
Latin: Catullus, Prose,  
Ovid (1/2 credit each)  
Spanish V (AP)  
Spanish II (H), III(H),  
IV (H)  
Spanish I, II, III, IV, V

### HISTORY

Flowering of Civilizations  
Modern Civilizations  
US History (AP)  
US History /American Studies  
Art History (AP)  
Art History  
Psychology (AP)  
Developmental Psychology (1/3)  
Economics (1/3)  
Contemporary World Issues (1/3)  
Recent American History (1/3)  
The Sixties (1/3)  
Ethics(1/3)  
Peace Studies (1/3)  
World Religions(1/3)  
Race, Ethnicity, & Society (1/3)  
Stopping Genocide (1/3)  
Modern Middle East (1/3)

Voices across the  
Globe (1/3)  
Latin America (1/3)  
Music History (1/3)

### The ARTS\*

Many courses in the  
fine and performing  
arts are offered.

**\*THE ARTS:** GFS enjoys a rich tradition in the arts. Our comprehensive arts curriculum offers breadth and depth in the fine and performing arts. In addition to the traditional offerings, the arts faculty provide STEM relevant opportunities for hands on learning, problem solving, and creativity through collaboration with our science, math and computer science faculty. A complete list of courses in the arts can be found in our curriculum guide at: <http://www.gfs.org/academics/upper-school/academic-program/index.aspx>

**Online School for Girls:** Garrison Forest School is an affiliate member of OSG. A student may supplement her curriculum by requesting to enroll in an online course through OSG if the course she seeks is not offered at GFS. Online enrollments are approved by the administration, as appropriate, on an individual basis.

## SCHOLARSHIP RECOGNITION PROGRAMS

### Class of 2014

National Merit Finalist –1  
National Merit Commended Scholars – 2  
National Hispanic Recognition Scholar – 1

## ADVANCED PLACEMENT RESULTS: 2014

Number of students taking an AP exam: 91  
Total number of AP exams taken: 197  
Percentage of students scoring 4 or 5: 52%  
Percentage of students scoring 3 or above: 83%

## SAT RESULTS

### MIDDLE 50% RANGE (Includes International Students)

	<u>Class of 2014</u>
Critical Reading	530—630
Math	510—660
Writing	510—670

## ACT RESULTS

### MIDDLE 50% RANGE (Includes International Students)

	<u>Class of 2014</u>
Composite	22—29
English	23—30
Math	22—29
Reading	23—32
Science Reasoning	22—27

## **The Garrison Forest School Motto**

Esse Quam Videri  
(To Be Rather Than To Seem)

**GRADING SYSTEM:**

High Honor = 90 and above

Honor = 85—89

Passing = 60

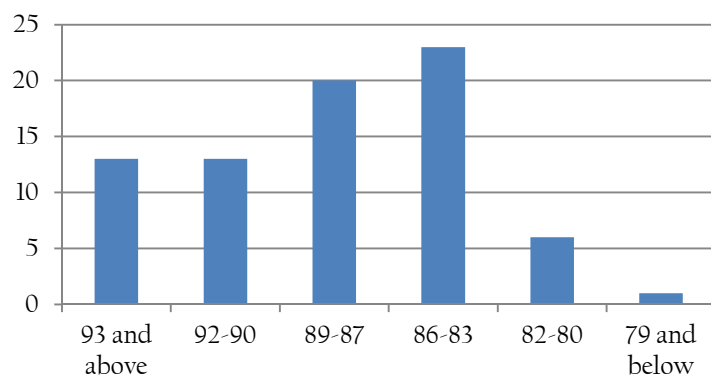
Grade equivalents are as follows:

90—100	A- to A+	4.0
80—89	B- to B+	3.0—3.9
70—79	C- to C+	2.0—2.9
60—69	D- to D+	1.0—1.9

**CUMULATIVE GPA:** The cumulative GPA is **unweighted** and includes all graded courses.

Full Range of Class: 96.22 to 79.81

Median: 88.19

**SIX-SEMESTER GRADE DISTRIBUTION: Class of 2015**

It is the policy of the school not to rank. The grade distribution provides a good indication of the position an applicant holds in each subject.

**GRADE DISTRIBUTION FOR COURSES IN WHICH THE CLASS OF 2015 WERE ENROLLED**

	A+	A	A-	B+	B	B-	C+	C	C-	D+	TOTAL
<b>Humanities</b>											
English III/American Studies		11	21	10	9	9	6	2			68
AP US History	2	8	8	6	1						25
US History/American Studies		6	12	11	7	7					43
AP Art History		4	4	4	3						15
AP Macroeconomics (OSG)				1	1	1					3
History Electives	1	11	8	8	5	1	3				37
<b>Mathematics</b>											
AP Calculus AB	1	2	5	5	1	3					17
AP Calculus BC		3	2	1	1	2					9
Algebra II		2	2	2	7	5	1	1			20
Precalculus	1	10	8	1	1	3					24
Honors Precalculus		2	4	1		1					8
Functions and Trigonometry		1	2	2							5
Statistics		1	3	3	3	2	1				13
<b>Science</b>											
AP Biology		1	2	5	3						11
AP Chemistry				1	2	2					5
Physics (H)	2	4	4	3	4	1					18
Physics		6	9	10	14	4	4	1			48
Science Electives	1	4	4	1							10
WISE	6	3									9
<b>Foreign Language</b>											
AP Latin			2		1	1					4
AP Spanish V		1	1	1	1	1					5
Latin II (H), III, III (H)		1		1	1			1	1		5
Latin Literature: Catullus			3		3	1					7
Latin Literature: Ovid			1	2	1	1				1	6
Latin Literature: Prose			2	2	1		1				6
French III, IV, IV (H)		1	1	2	3	2					9
Spanish II, II(H) III, III(H), IV, IV(H)		3	16	8		2					29

# FIVE YEAR SURVEY OF COLLEGES ATTENDED

The 75 members of the Class of 2014 are planning to attend 47 different colleges.

*University of Alabama (4)	Denison University (2)	University of Maryland, Baltimore County (1)	Salisbury University (2)
Allegheny College (1)	University of Denver (1)	*Massachusetts Inst. of Tech. (1)	*Sarah Lawrence College (1)
American University (2)	DePaul University (1)	McDaniel College (2)	Savannah College of Art (2)
Anderson University- SC (1)	Dickinson College (6)	*Miami University of Ohio(7)	School of the Art Institute of Chicago (2)
University of Arizona (1)	*Drew University (1)	University of Miami (1)	School of Visual Arts (1)
Art Institute of Pittsburgh (1)	*Duke University (3)	University of Michigan (2)	Scripps College (1)
Auburn University (2)	*Elizabethtown College (1)	Middlebury College (1)	Seton Hall University (1)
Barnard College (1)	*Elon University (4)	Mills College (1)	*Sewanee University (2)
Bates College (1)	Emmanuel College (1)	Mississippi State U. (1)	Smith College (1)
Baylor University (1)	*Emory University (3)	University of Mississippi (1)	South Carolina State U. (1)
Binghamton University (1)	Florida A&M (1)	Morgan State University (1)	*Spelman College (1)
Boston University (3)	Fordham University (1)	Mount Holyoke College (1)	Univ. of South Carolina (4)
Bowdoin College (1)	*Franklin & Marshall Coll.(6)	Mount Saint Mary's U. (1)	University of St. Andrews, Scotland (1)
Brandeis University (1)	Frostburg State Univ. (1)	University of New Haven (1)	St. Lawrence University (1)
Bryn Mawr College (2)	*Furman University (3)	NY School of Int. Design (1)	*St. Mary's College of MD (2)
*Bucknell University (7)	*George Mason University (2)	New York University (1)	*Susquehanna University (1)
*U. of California at Riverside(1)	*Georgetown University (4)	UNC – Asheville (1)	Syracuse University (6)
U. of California at San Diego(3)	Georgia Institute of Tech. (1)	*UNC – Charlotte (1)	*University of Tampa (1)
*U. of California at Santa Cruz(1)	Gettysburg College (1)	UNC – Greensboro (1)	Temple University (2)
Carnegie Mellon Univ. (2)	Hamilton College – NY (2)	*UNC – Wilmington (2)	Texas Christian University(1)
Carroll Community College (1)	Hampshire College – (1)	Northeastern University (1)	University of Texas (2)
Case Western Reserve U. (1)	High Point University (2)	Northwestern University (1)	Towson University (2)
Catholic University (1)	Hobart & William Smith (3)	Notre Dame of MD Univ.(1)	Trinity University (1)
University of Chicago (1)	University of Houston (1)	*University of Notre Dame (1)	Tufts University (1)
Claremont McKenna Coll.(1)	Howard University (1)	Oberlin College (1)	Tulane University (4)
Clemson University (6)	*Indiana U. at Bloomington (1)	Ohio University (2)	Vanderbilt University (1)
Coastal Carolina Univ. (2)	Iona College (1)	*Ohio State University (1)	*University of Vermont (4)
*Colgate University (1)	Ithaca College (2)	*Penn State University (8)	Villanova University (1)
*College of Charleston (4)	*Jacksonville University (1)	*Univ. of Pennsylvania (2)	*Virginia Tech (6)
*College of William and Mary (4)	*James Madison Univ. (3)	Pepperdine University (1)	University of Virginia (10)
College of Wooster (2)	John Cabot University (1)	Philadelphia University (1)	Wagner College (1)
*Univ. of Colo. at Boulder (4)	* Johns Hopkins University (7)	University of Pittsburgh (1)	Wake Forest University (2)
Colorado College (1)	Kent State University (1)	Rensselaer Polytechnic Institute (2)	*Washington and Lee U. (6)
Colorado State University (2)	*University of Kentucky (4)	Rhode Island School of Design (2)	Washington College (1)
Columbia College Chicago (1)	Kenyon College (2)	University of Richmond (2)	*Washington University in St. Louis (3)
Columbia University (2)	Long Island U., Brooklyn (1)	*Roanoke College (2)	West Virginia Tech (1)
University of Connecticut (1)	*Loyola Marymount U. (1)	*University of Rochester (1)	Westminster Choir Coll. (1)
*Cornell University (4)	*Loyola University MD (5)	*Rollins College (2)	University of Wisconsin (2)
Davidson College (1)	Marist College (2)	Saint Francis University (1)	Worcester Polytechnic Institute(1)
University of Delaware (3)	U. of Mary Washington (1)	Saint Joseph's University (1)	Yale University (1)
Delaware Valley College (1)	*University of Maryland (33)		

99% of Garrison Forest's graduates over the past five years have matriculated to four-year colleges and universities.

\* Colleges entered by one or more students of the Class of 2014  
The Class of 2014 applied to an average of 7.4 colleges each.